

'TINY TREASURES'

Square - Part 5



Colour, Black & Gold
12 monthly parts!

'Tiny Treasures' Square Design Part 5

Design area: 15.29 x 15.29 inches

Stitches: 214 x 214

Material:

Zweigart 28 count evenweave or 14 count Aida, 22 x 22 inches

If 25 count Lugana is used: 24 x 24 inches

Stitches used:

Back stitch, one strand of floss

Cross stitch two strands of floss

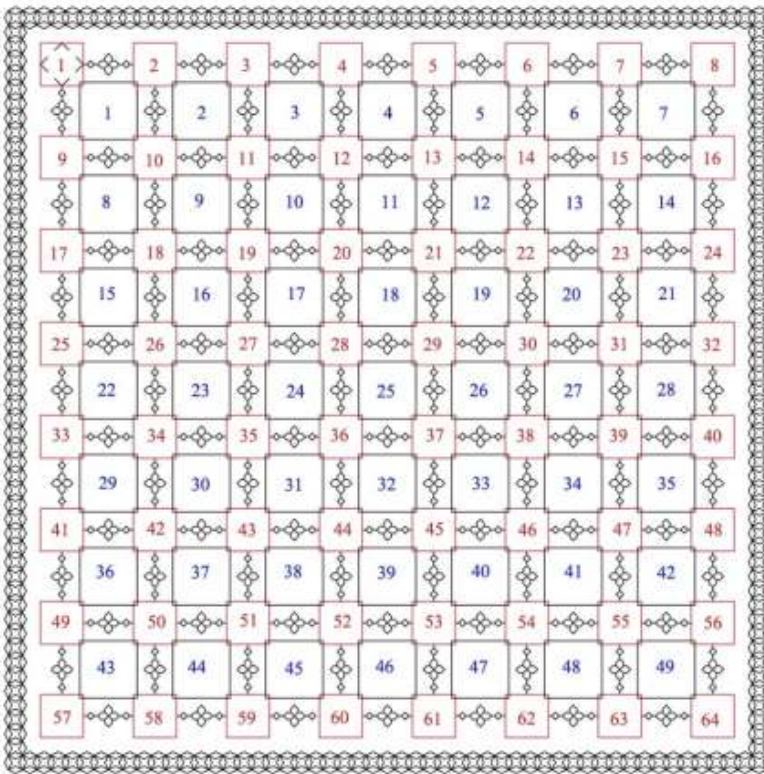
Evenweave: stitches are worked over 2 threads unless the pattern indicates otherwise.

Cross stitch: stitches are worked over two threads or one block unless the pattern indicates otherwise.

1. Part 5 sits below Part 1 on the left hand side of the chart.

2. Work Part 5 as follows:

Work flower motifs and pattern blocks finishing off the ones from Part 1
Continue the border using one strand of floss. Add beads after the whole embroidery has been completed.



Square Pattern Layout

Design area: 15.29 x 15.29 inches

Material: Zweigart 28 count evenweave or 14 count Aida, 22 x 22 inches

64 Flower motifs

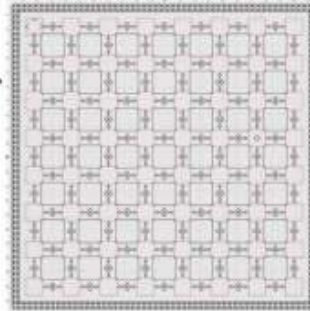
49 Pattern Blocks

112 Mini links

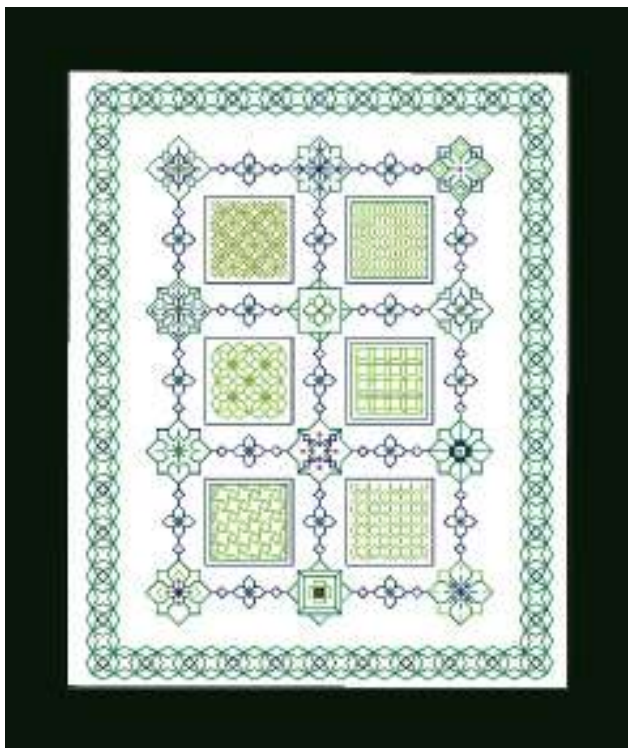
Border = 226 Tiny Treasures

Each flower can be a different colour

Each pattern block can be a different colour



I hope you enjoy reading the information and working the design. If you have any queries please contact: lizalmond@blackworkjourney.co.uk



Mini Samplers

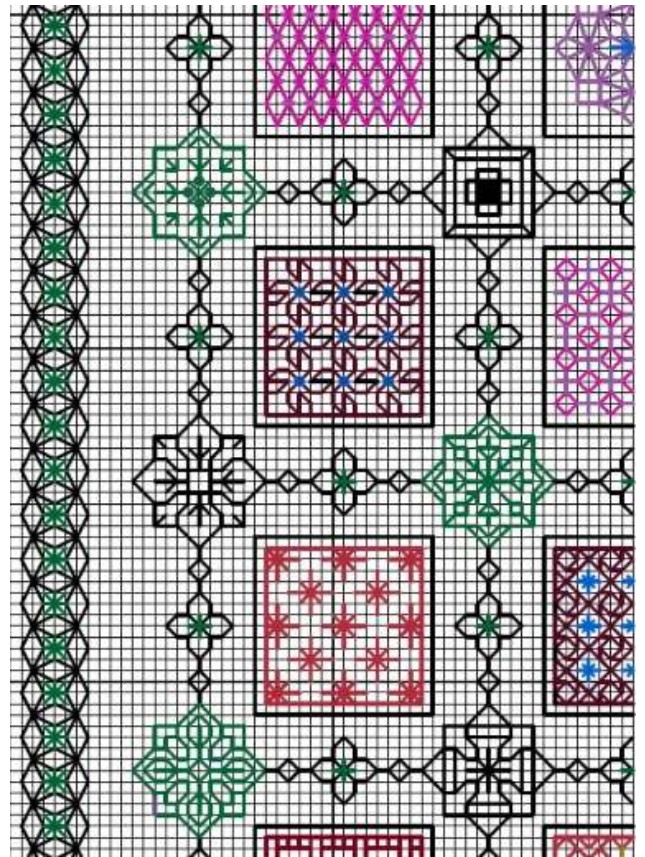
Take your favourite squares and floral motifs to create a series of mini samplers. Use just one colour, variegated threads or a range of colours. Each one will be different!

Design size:

6.14 x 7.86 inches, 86 x 110 stitches

Chart is attached!

My thanks go to Elizabeth for creating two mini samplers for us to enjoy!

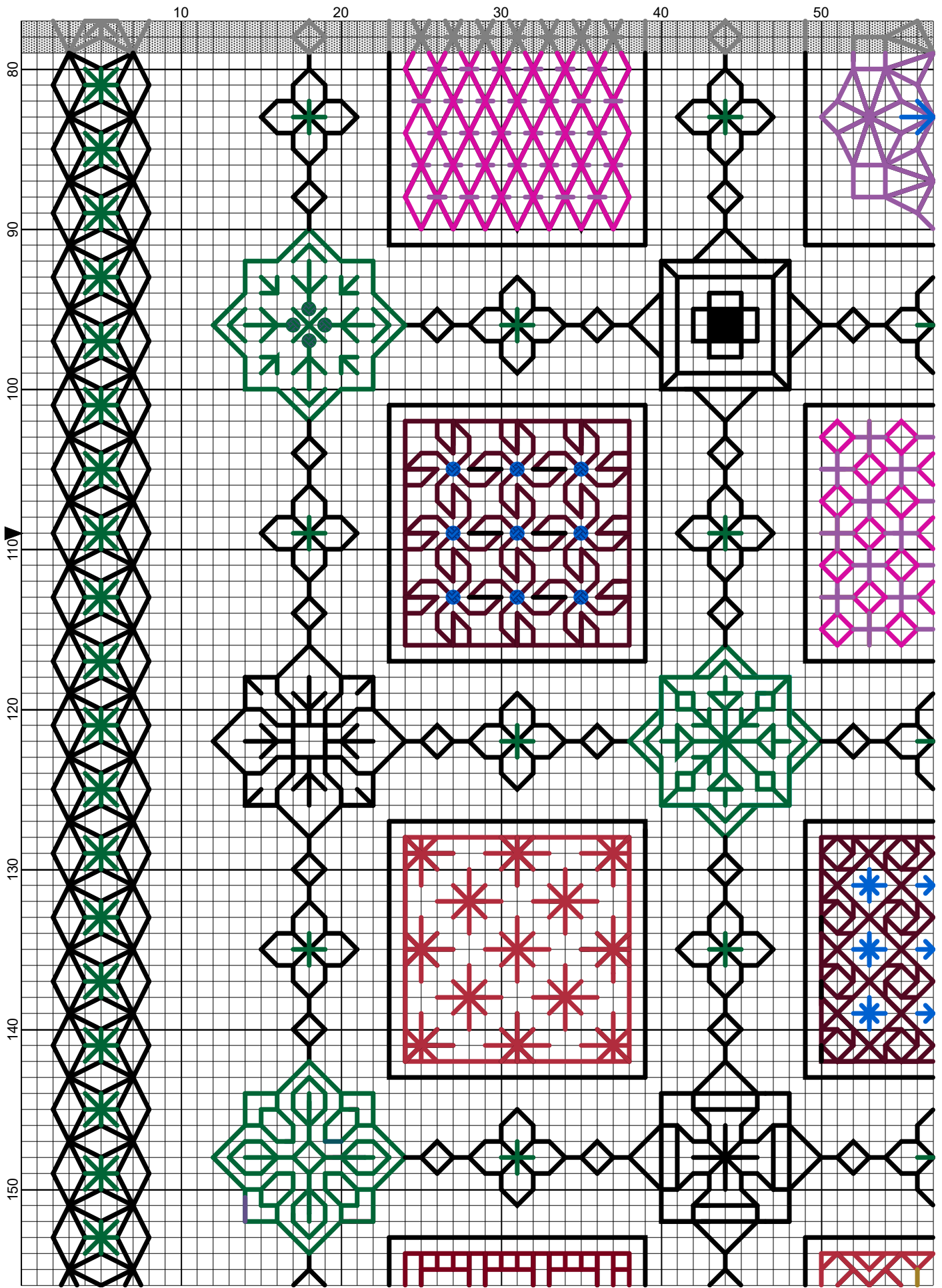


Part 5 Square design Embroidery and chart

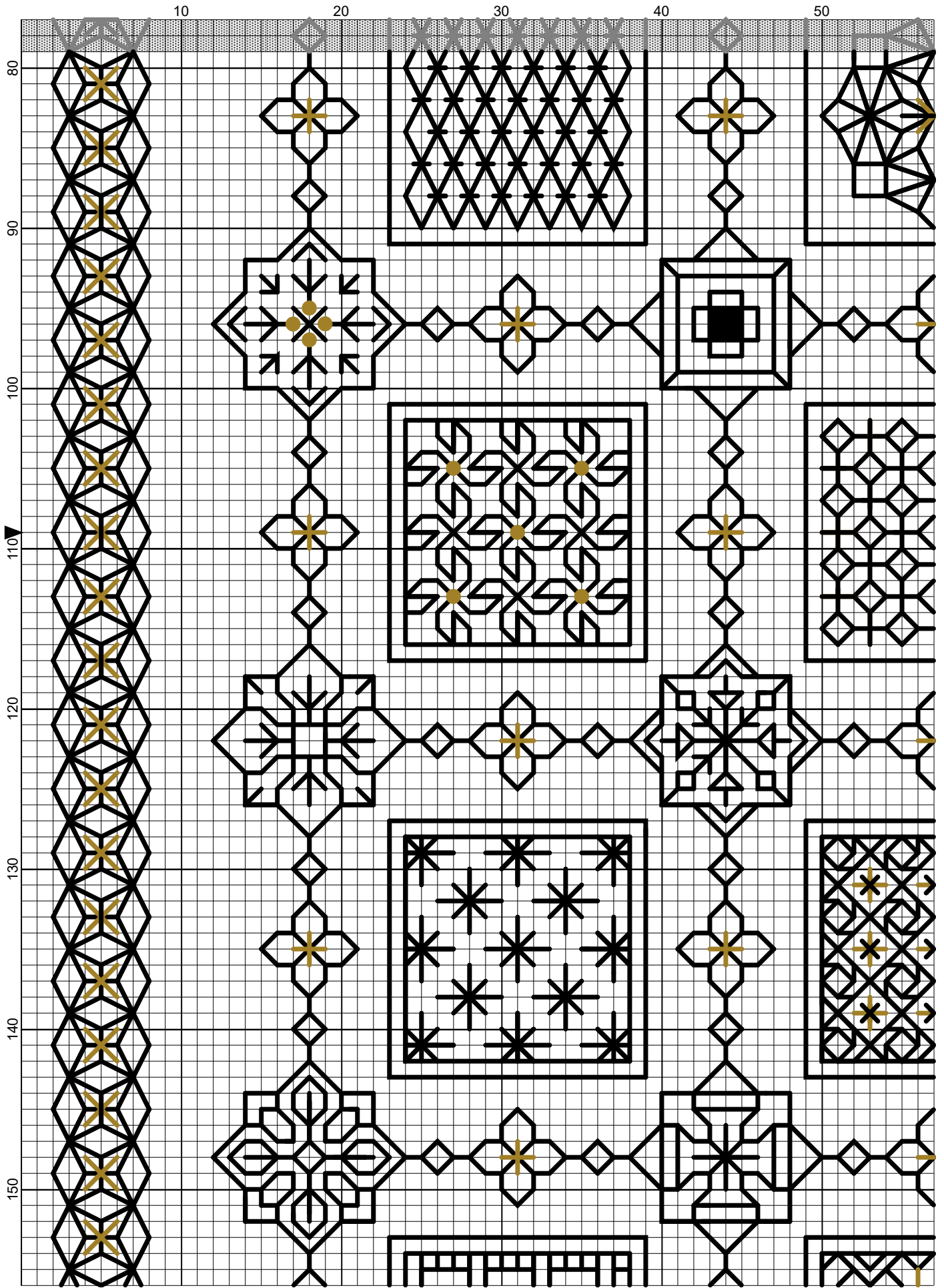
Elizabeth Strangeways - Mini Samplers



Tiny Treasures Square



Elizabeth Almond



Elizabeth Almond

Mini Samplers

Take your favourite squares and floral motifs to create a series of mini samplers. Use just one colour, variegated threads or a range of colours. Each one will be different!

Design size: 6.14 x 7.86 inches, 86 x 110 stitches

Material:

Zweigart 28 count evenweave, or 14 count Aida 10 x 12 inches

Tapestry needle No 24, Small embroidery ring

Mill Hill glass beads – colour to suit sampler

Threads: DMC 909 emerald, 906 parrot green, 796 royal blue, DMC Light Effects - E3852 Dark Gold

Stitches used:

Back stitch - one strand, Cross stitch - two strands, Eyelet stitch - one strand

Method:

Edge the fabric to prevent fraying. Fold the fabric into four quarters to find the centre point. Mount the embroidery in the ring so that the fabric is 'drum' tight.

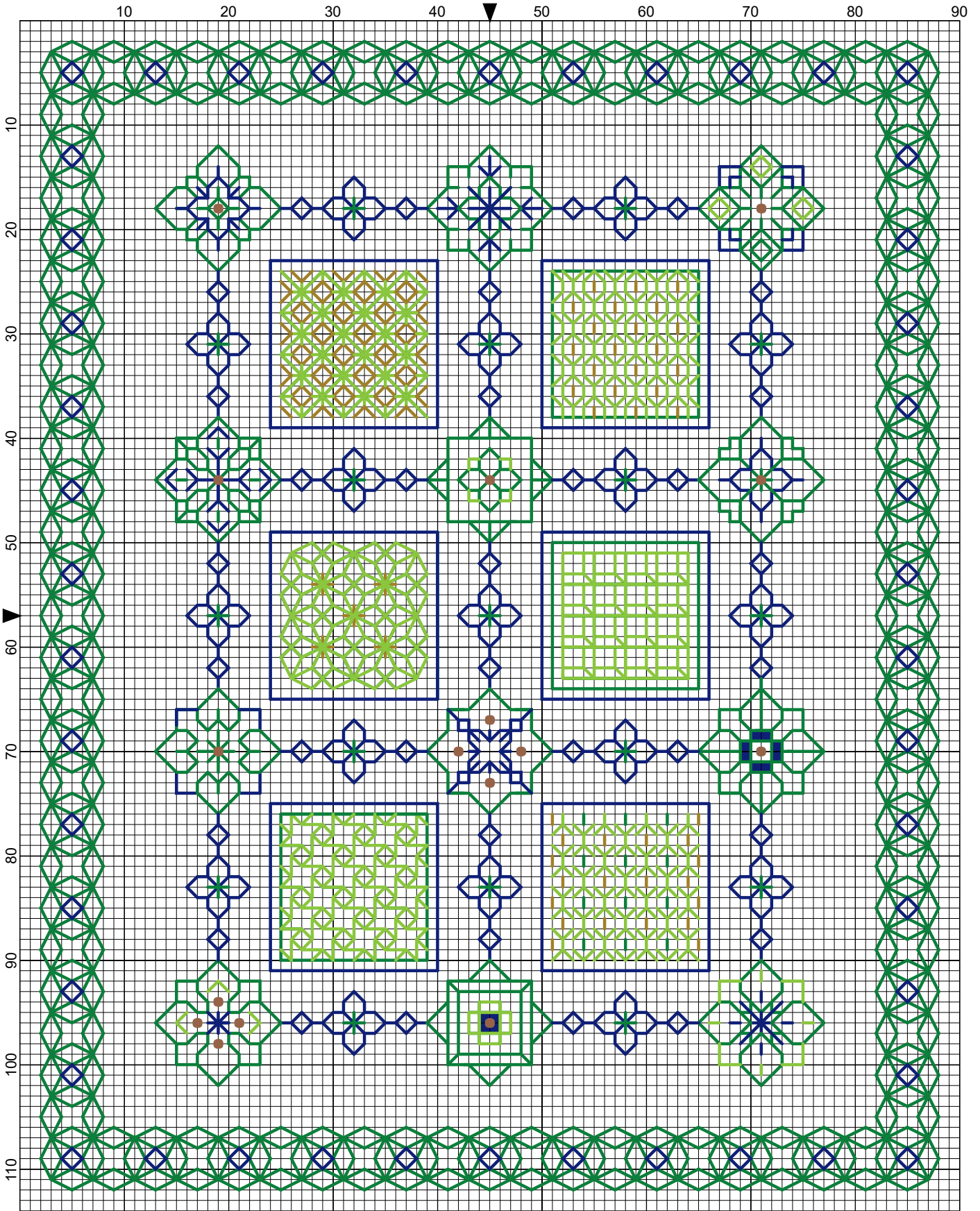
1. Work the flower motifs and links first.
2. Work the fillers in turn using the colours selected. Work the border in one strand of floss. Add the beads after the embroidery has been completed.
3. Place the finished embroidery face down on a soft towel and press lightly.



Elizabeth Strangeways Mini Samplers

I hope you enjoy working this design as much as I have enjoyed creating it. If you have any queries please contact: lizalmond@blackworkjourney.co.uk

Mini Sampler



Elizabeth Almond